



# WOOD WOOL

[WWW.ENOCOUSTIC.COM.SG](http://WWW.ENOCOUSTIC.COM.SG)

 enocoustic  
Enovative . Acoustic . Solutions





## WOOD WOOL

Enocoustic Wood Wool contains two of the world's oldest building materials. Made of 65% long wood fibres and 35% portland cement, using only from sustainable plantations and the natural process of mineralisation, which gives it its raw aesthetic finish. Due to its natural raw materials and sustainable manufacturing process, Wood Wool is also accredited with the Singapore Green Building Product Label.

### Product Specifications

Composition	65% wood + 35% cement
Thickness	25mm (15mm available on request)
Average Mass	$\pm 9\text{kg/m}^2$
Panel Size	600mm x 2400mm
Sound Absorption (ASTM C423-17)	NRC 0.4 (no air gap) NRC 0.9 (50mm air gap)
TVOC EMISSION RATE (ASTM D5116)	Not detected
FIRE TEST	Class 0 (BS 476 Part 6) Class 1 (BS 476 Part 7)

### Key Features



#### Recycled Material

Using only trees harvested from plantations & forest sustainability programs.



#### Green Material

Sustainable manufacturing process free from chemicals, binders & adhesives.



#### High Sound Absorption

Helps to dampen noise & promote excellent acoustic performance in comfort.



#### Anti-rot & Anti-fungi

Able to withstand harsh environment & external weather without rotting.



#### Low Moisture Absorption

Retains moisture in ambient air & controls humidity by absorbing & emitting less.



#### Thermal Insulator

Helps with absorbing & emitting heat into ambient air when the temperature cools down.



#### Fire Regulations

Complies with BS 476 Part 6 & 7 fire requirements under Singapore FSB regulations.

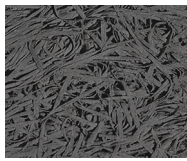


# COLOUR CHART

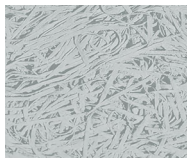
---



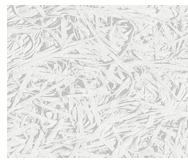
DARKNESS



SMOKEY  
GREY



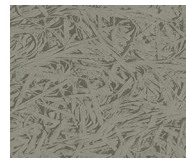
IRONING  
BOARD



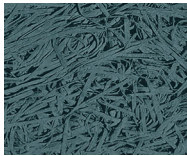
CHALK



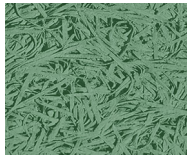
NATURAL  
WHITE



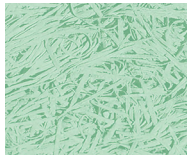
NATURAL  
GREY



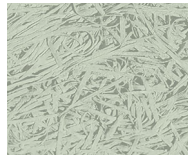
MIDNIGHT  
SEA



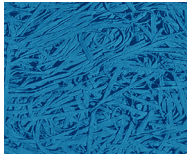
FERN GREEN



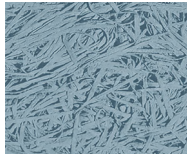
PASTEL  
GREEN



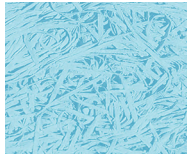
HONEYDEW  
PEEL



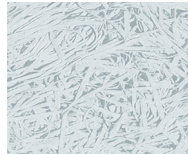
ROYAL BLUE



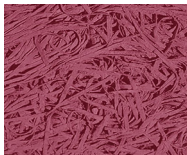
WINTER TEAL



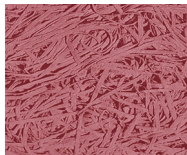
SUMMER SKY



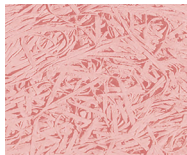
SUBTLE BLUE



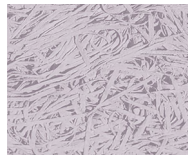
KEEPSAKE  
ROSE



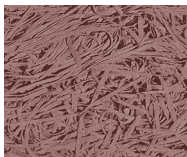
REMEMBER  
ROSE



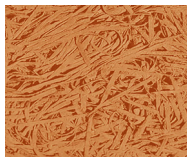
BABY BLUSH



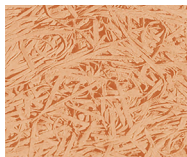
LAVENDAR  
DHALIA



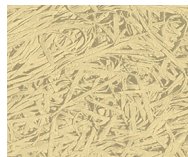
WILTED ROSE



CINNAMON



NUDE LATTE



MACAROON

*\*Custom color on request (nippon paint preferred).*

