



QUIET PLACE

ACOUSTIC PANELS

WWW.ENOCOUSTIC.COM.SG

 **enocoustic**
Enovative . Acoustic . Solutions



QUIET PLACE ACOUSTIC PANELS

Quiet Place Acoustic Panel is manufactured through a process which is free from chemicals, binders and adhesives. Each panel is created from responsibly sourced and environmentally friendly materials.

Encased in a solid wood frame, they impart a timeless and quiet warm aesthetic to any space. They can be installed in offices, shops, restaurants and home. The panels offer excellent sound dampening function and aesthetic beauty, transforming your interior both visually and acoustically.

Product Specifications

Panel Length	1240mm
Panel Width	640mm
Thickness	70mm
Fabric Composition	100% polyester fibre (PET)
Sound Absorption (ASTM C423-17)	NRC 0.75
Fire Rating (Infill)	Class 0

Key Features



Recycled Material

Raw materials consist of recycled post-consumer products e.g. plastic bottles.



Green Material

Sustainable manufacturing process free from chemicals, binders & adhesives.



High Sound Absorption

Helps to dampen noise & promote excellent acoustic performance in comfort.



Anti-rot & Anti-fungi

Able to withstand harsh environment & external weather without rotting.



Low Moisture Absorption

Retains moisture in ambient air & controls humidity by absorbing & emitting less.



Non-flammable

Product will melt & self-extinguish in case of contact with fire.



Fire Regulations

Complies with BS 476 Part 6 & 7 fire requirements under Singapore FSB regulations.

FABRIC CHART



BARLEY



BEACH



LATTE



ASH GRAY



ACORN



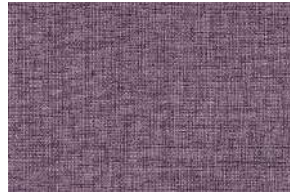
DEEP BROWN



DOVETAIL



CORAL



BERRY BUSH



MARIGOLD



JADE



CLASSIC GRAY



KOALA



CHARCOAL



ONYX

WOOD CHART



SUPER WHITE



WHITE 5%



WHITE



PURE



BOURBON



ICE BROWN



MAHOGANY



CHERRY CORAL



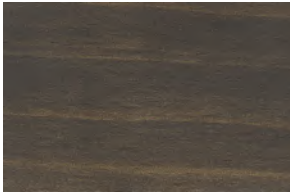
HAVANNA



CHOCOLATE



BLACK



CHARCOAL



ENOCOUSTIC PTE LTD

62 Oxley Bizhub 2
#01-41, Ubi Rd 1
Singapore 408734

+65 6926 2610
info@enocoustic.com.sg
www.enocoustic.com.sg
f @enocoustic